

1 Trumpet

"Las Avispas"

JUAN LUIS GUERRA

A 7 B 8 7

C 5

D 7 E *coros* 5

F 7 G

H 6 2 I *x1ra vez*

J 2 1.2.3. 4.

K 3 3

I Trumpet

L *x1ra vez* 1.2.3. 2 4.

M 3

N 8 **O** 5

1. 2. CODA

"Las Avispas"

2 Trumpet in B \flat

JUAN LUIS GUERRA

1. 2. **E** *coros* 5

F 7 **G**

H 6 1. 2.

2. **I** *x1ra vez* 2 1.2.3. 4.

J

K 3 3 3

L *x1ra vez* 1.2.3. 2 4.

M II Trumpet in B \flat

3

N O

8 5

1. 2. CODA

"Las Avispas"

3 Trumpet in B \flat

JUAN LUIS GUERRA

A 8 B 7

C 5

D 7 1. 2. E *coros* 5

F 7 G

H 6 1. 2. I *xlra vez*

J 2 1.2.3. 4.

K 3 3

Trumpet in B \flat

L *x1ra vez* **1.2.3.2** **4.** **M**

3

N **8** **O** **4** **1.**

2. **2** CODA

Alto Sax

"Las Avispas"

JUAN LUIS GUERRA

1. 2. **E** *coros* 5

F 8 **G**

H

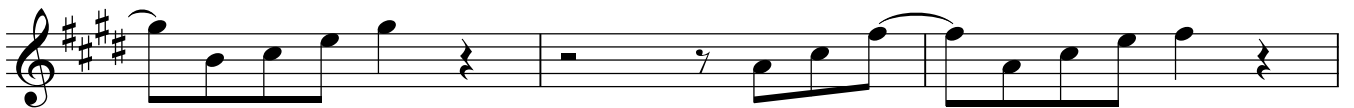
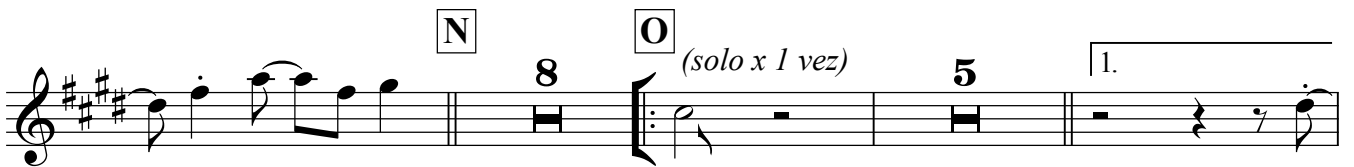
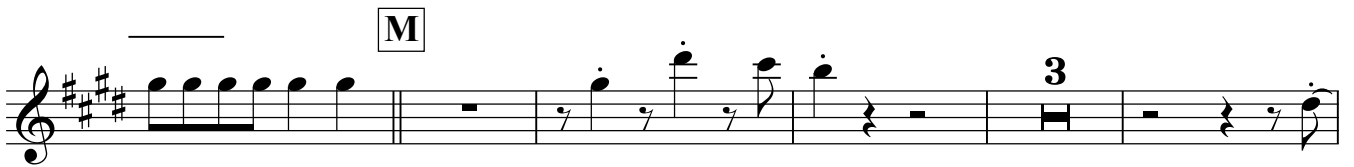
1. 2.

I *x1ra vez* 2 1.2.3. 4.

J

K 3 3 3

Alto Saxophone



Tenor Sax

"Las Avispas"

JUAN LUIS GUERRA

1. 2. **E** *coros* 5

F 8 **G**

H

1. 2.

I *x1ra vez* 2 1.2.3. 4.

J

K 3 3 3

I Trombone

"Las Avispas"

JUAN LUIS GUERRA

Musical score for I Trombone, titled "Las Avispas" by Juan Luis Guerra. The score is in bass clef with a key signature of one sharp (F#) and a common time signature (C). It consists of 11 staves of music, each containing various musical notations such as notes, rests, and dynamic markings. The score is divided into sections labeled A through K. Section A is marked with a '7' and a '5'. Section B is marked with an '8'. Section C is marked with a '5'. Section D is marked with a '7'. Section E is marked with a '5' and includes the instruction 'coros'. Section F is marked with a '7'. Section G is marked with a '7'. Section H is marked with a '6' and a '2'. Section I is marked with a '2' and includes the instruction 'x1ra vez'. Section J is marked with a '2' and includes the instruction '1.2.3.' and '4.'. Section K is marked with a '3' and includes the instruction '3'. The score concludes with a final staff of music.

I Trombone

L *x1ra vez*

1.2.3.2

4.

M

N

8

O

5

1.

2.

CODA

CODA

II Trombone

"Las Avispas"

JUAN LUIS GUERRA

II Trombone

"Las Avispas"

JUAN LUIS GUERRA

A 8 B 7

C 5

D 7 1. 2. E *coros* 5

F 7 G

H 6 1. 2. I *x1ra vez*

J 2 1.2.3. 4.

K 3 3

II Trombone

L *x1ra vez*

1.2.3. 2 4.

M

N **O** 8 5

1. 2. CODA

Piano

"Las Avispas"

JUAN LUIS GUERRA

Em // G // Am // B

A

// Em B Em G // Am //

B

B // Em // G // Am //

C

B B C B Em // G // Am //

D

B // Em // G // Am //

E *coros*

1. // 2. // Em // G // Am

F

// B // Em // G // Am

G Piano

Musical notation for section G, measures 1-8. The key signature is one sharp (F#). The notation shows a sequence of chords: B, Em, G, and Am, with repeat signs (//) indicating repeated patterns.

Musical notation for section H, measures 1-8. The key signature is one sharp (F#). The notation shows a sequence of chords: B, Em, G, and Am, with repeat signs (//) indicating repeated patterns.

Musical notation for section I, measures 1-8. The key signature is one sharp (F#). The notation shows a sequence of chords: B, B, C, D, and Em, with first and second endings (1. and 2.) indicated by brackets.

Musical notation for section J, measures 1-8. The key signature is one sharp (F#). The notation shows a sequence of chords: D, D, C, D, Em, D, and C, with first and second endings (1.2.3. and 4.) indicated by brackets.

Musical notation for section K, measures 1-8. The key signature is one sharp (F#). The notation shows a sequence of chords: D, Em, D, C, D, Em, D, and C.

Musical notation for section L, measures 1-8. The key signature is one sharp (F#). The notation shows a sequence of chords: D, Em, C, D, and Em, with first and second endings (1.2.3.) indicated by brackets.

Musical notation for section M, measures 1-8. The key signature is one sharp (F#). The notation shows a sequence of chords: D, B, B7, Em, G, and a final repeat sign (//).

A musical staff in G major (one sharp) with a treble clef. The bass line contains the following chords and repeat signs: Am, //, B, //, Em, //, G, //.

A musical staff in G major with a treble clef. The bass line contains the following chords and repeat signs: Am, //, B, //, Em, //, G, //. A circled 'O' is positioned above the staff, with a vertical line and double dots indicating a repeat of the section from the start of the Em chord to the end of the G chord.

A musical staff in G major with a treble clef. The bass line contains the following chords and repeat signs: Am, //, B, //, B, //, Em, //. A first ending bracket spans from the start of the second B chord to the end of the Em chord. A second ending bracket spans from the start of the second B chord to the end of the B chord. The word "CODA" is written above the staff.

A musical staff in G major with a treble clef. The bass line contains the following chords and repeat signs: G, //, Am, //, B, //, Em. The final measure shows a G chord in the bass line and a G major triad in the treble line, followed by a fermata.

Bass guitar

"Las Avispas"

JUAN LUIS GUERRA

Em // G // Am //

B // ^A Em // G // Am

// B // ^B Em // G //

Am // B // ^C Em //

G // Am // B // ^D Em

// G // Am // B ^{1.} //

^{2.} // ^E *coros* Em // G // Am //

B // ^F Em // G // Am

// B // ^G Em // G //

Am // B // ^H Em // G

// Am // ^{1.} B // ^{2.} B //

^I ^C D Em // ^{1.2.3.} D // ^{4.} D ^J

Bass guitar

Em D C D Em

D **K** C D Em D C D

L C D Em

D **M** Em G

Am B Em

G Am B Em

G Am B Em

CODA Em G

Am B Em